



Kidman Trail Infrastructure Asset Data Collection Project

USING EASY GPS FOR DOWNLOADING GPS DATA

Author: Chris Medlin (for Horse SA)

Date: 13th May, 2008.

Version 1

Horse SA
Postal Address: PO Box 483, Plympton SA 5038
Ph: (+61 8) 8294 2460
Fax: (+61 8) 8294 2860
Email: horsesa@horsesa.asn.au

USING EASY GPS FOR DOWNLOADING GPS DATA

Purpose

The purpose of this document is to outline how to use “Easy GPS” software to download waypoints and tracks from your GPS receiver.

Background

The Mawson Trail Asset Audit requires that you use a handheld GPS receiver to record the location of trail assets. “Waypoints” collected using your GPS are used to record the location of these assets. You should also use your GPS to collect a “track” log. A track logs your location at a predefined interval (eg. every 15 seconds or every 20 metres) and is required if you wish to “Geo Tag” any digital photos that you take. Ideally, at the end of each day, you should download to a PC/Laptop all of the waypoints collected during the day. Same goes for the “track” showing where you've been that day.

This document will show you how to do this using a relatively simple (and free) piece of software called “Easy GPS”.

About Easy GPS Software

Easy GPS is produced by a company called “TopoGrafix” in Massachusetts (USA). Easy GPS can be downloaded for free from www.easygps.com

Easy GPS allows you to transfer data (waypoints, routes, tracks) to and from you GPS unit. It works with Garmin, Magellan, Lowrance and Eagle GPS receivers.

Installing Easy GPS

Go to www.easygps.com

Click the **Download** link to download the software.

Double click the “**SetupEasyGPS.exe**” file that you have just downloaded to install the software.

The following pages describe how to use Easy GPS to download and manage your GPS data.

Getting your GARMIN GPS to Communicate with your PC/Laptop

THIS IS IMPORTANT – PLEASE READ!

To enable your **GARMIN GPS** to communicate with your PC/Laptop, you will need to specify the correct **Input/Output Format**. This is a parameter that you set within the GPS itself. Do this as follows...

For GARMIN eTrex...

1. Press the **PAGE** button to switch to the **MENU** Page. Press the *UP* and *DOWN* button and highlight the ‘**SETUP**’ field. Press **ENTER**. The **SETUP** Page appears.
2. Press the *UP* or *DOWN* button to select the ‘**INTERFACE**’ field. Press **ENTER**. The **INTERFACE** Page appears.
3. Press **ENTER** on the ‘**I/O FORMAT**’ field. Press the *UP* or *DOWN* button to select “**GARMIN**” as the desired I/O format. Press **ENTER**. Press **PAGE** to return to the page of your choice.

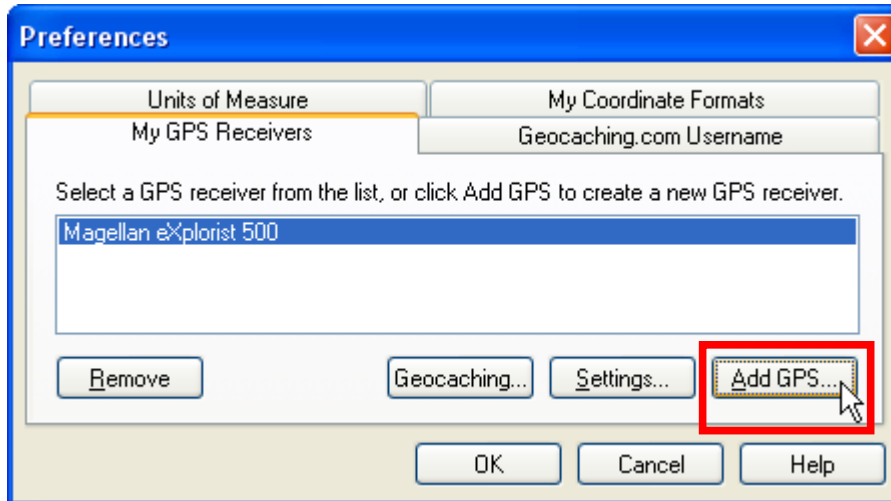
USING EASY GPS FOR DOWNLOADING GPS DATA

Using Easy GPS – Setting Software Preferences

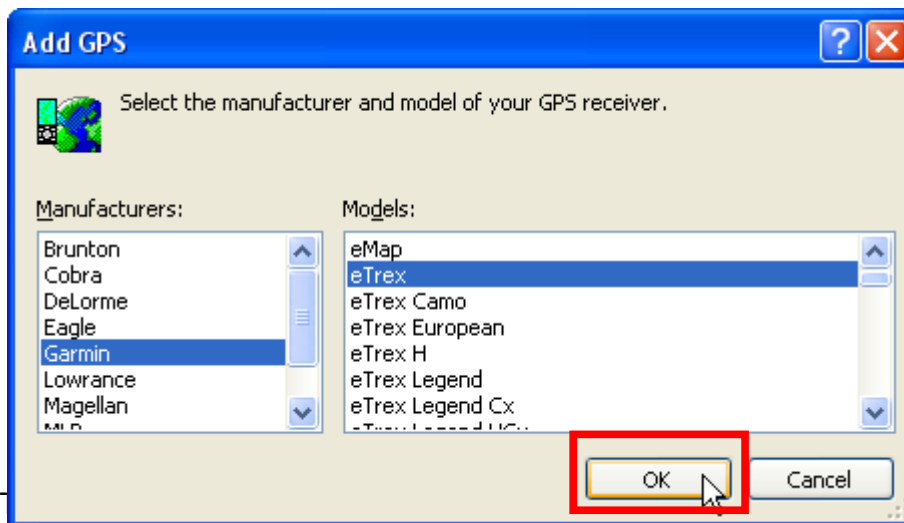
The first time you use Easy GPS, you will be prompted to indicate the type of GPS that you use and specify your preferred units of measure.

Type of GPS Receiver

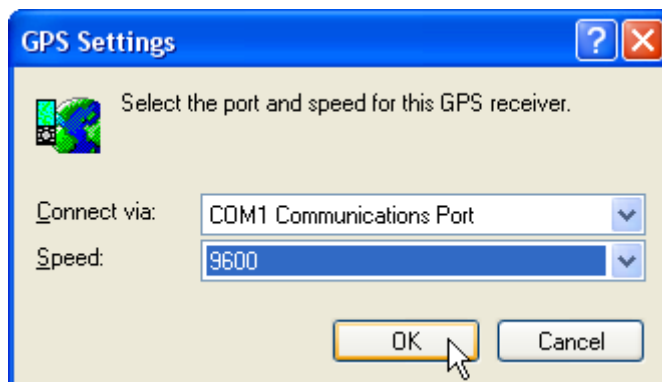
To add your GPS receiver, click **Add GPS** button



In the **Add GPS** dialog that appears, select your GPS *manufacturer and model*.



Then, indicate which port your GPS is connected to and the data transfer speed...



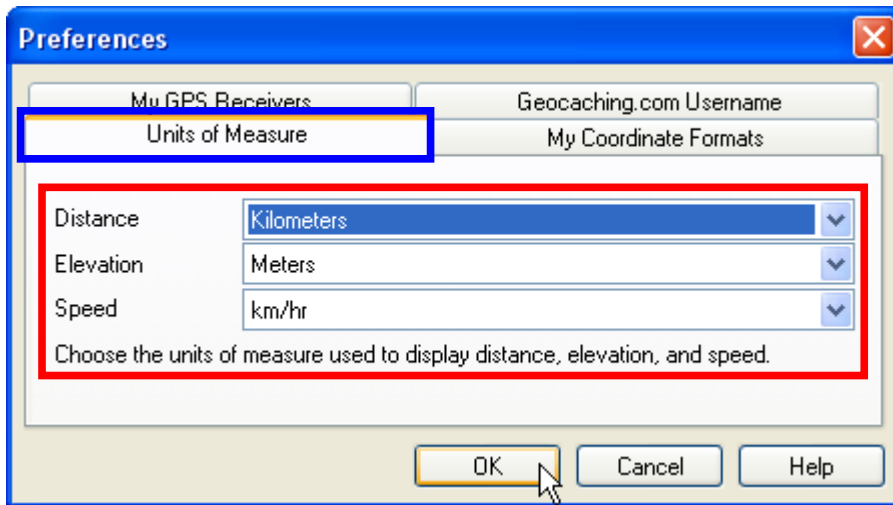
eg. Speed = 9600 for Garmin GPS

Click **OK**

USING EASY GPS FOR DOWNLOADING GPS DATA

Units of Measure

Back in the **Preferences** dialog, click on the “**Units of Measure**” tab.



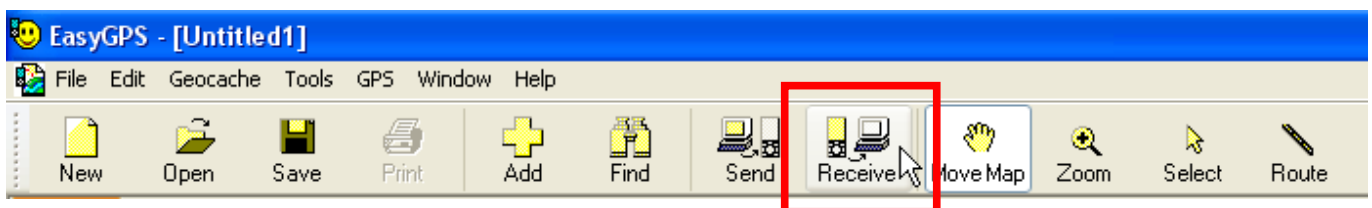
NOTE: Preferences can be altered by choosing **Edit ► Preferences** from the Easy GPS menus.

Using Easy GPS – Downloading Waypoints

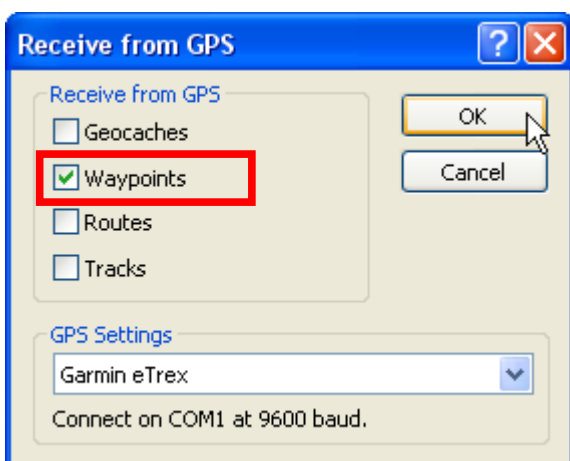
Connect your GPS receiver to your PC/Laptop using the appropriate data cable. Turn ON your GPS unit.

Now using Easy GPS...

Click the **Receive** button on the toolbar



Select **Waypoints ONLY**.



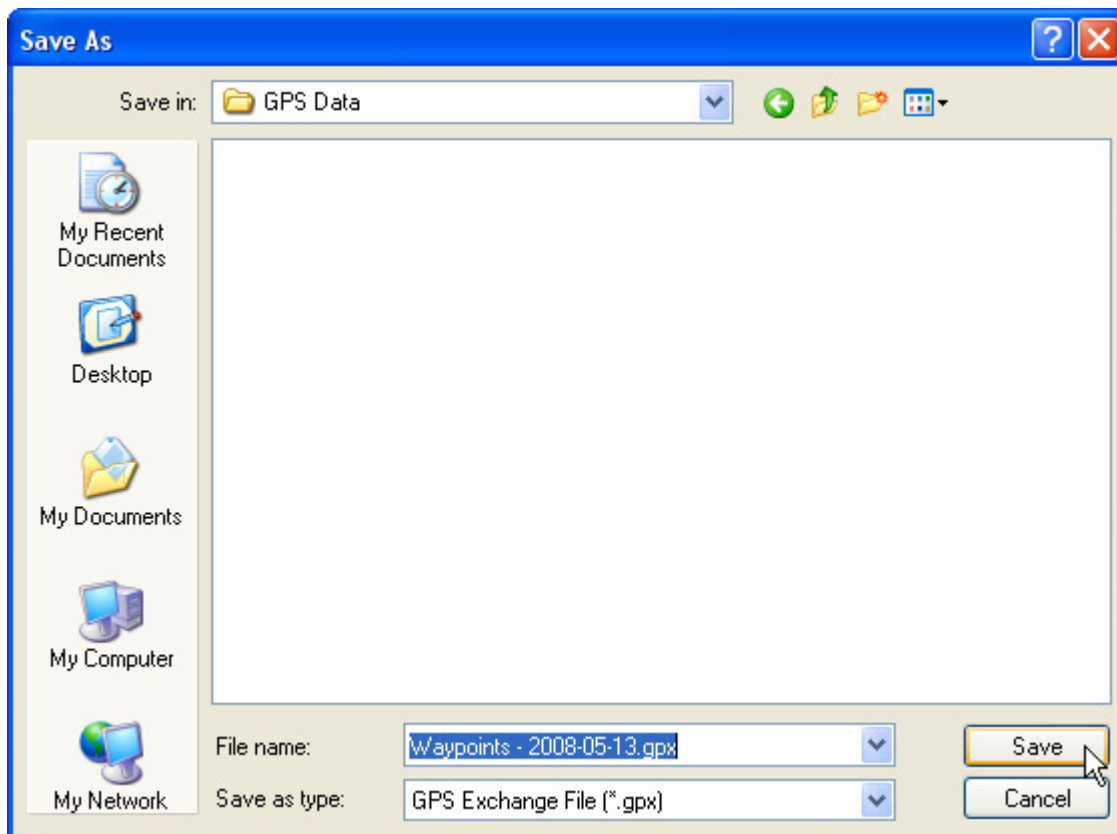
Then click **OK**

USING EASY GPS FOR DOWNLOADING GPS DATA

Easy GPS will now download all of the waypoints from your GPS receiver.

Using Easy GPS – Saving Waypoints as GPX

From the Easy GPS menus, choose **File ► Save As...**



Choose a disk location... then enter a file name (as per example above).

Save as type: “GPS Exchange File (*.gpx)”

Click **Save** to finish.

Using Easy GPS – Downloading Tracks

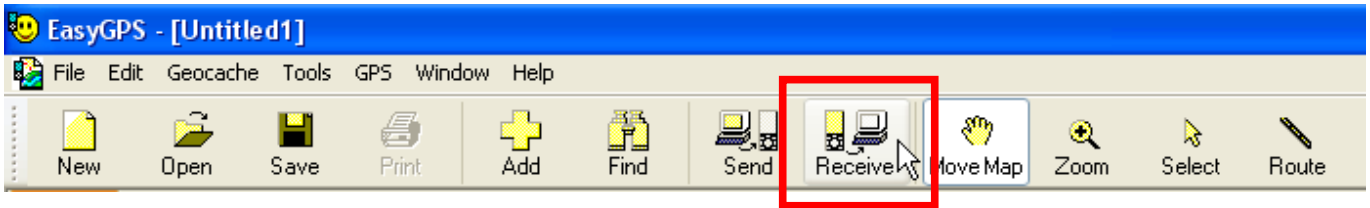
In Easy GPS, click the New button.



NOTE: This first step is important! As it will serve to keep your track log data in a separate file from any waypoints that you've already downloaded.

USING EASY GPS FOR DOWNLOADING GPS DATA

Again, click the **Receive** button on the toolbar



This time, select **Tracks** in the Receive from GPS dialog.

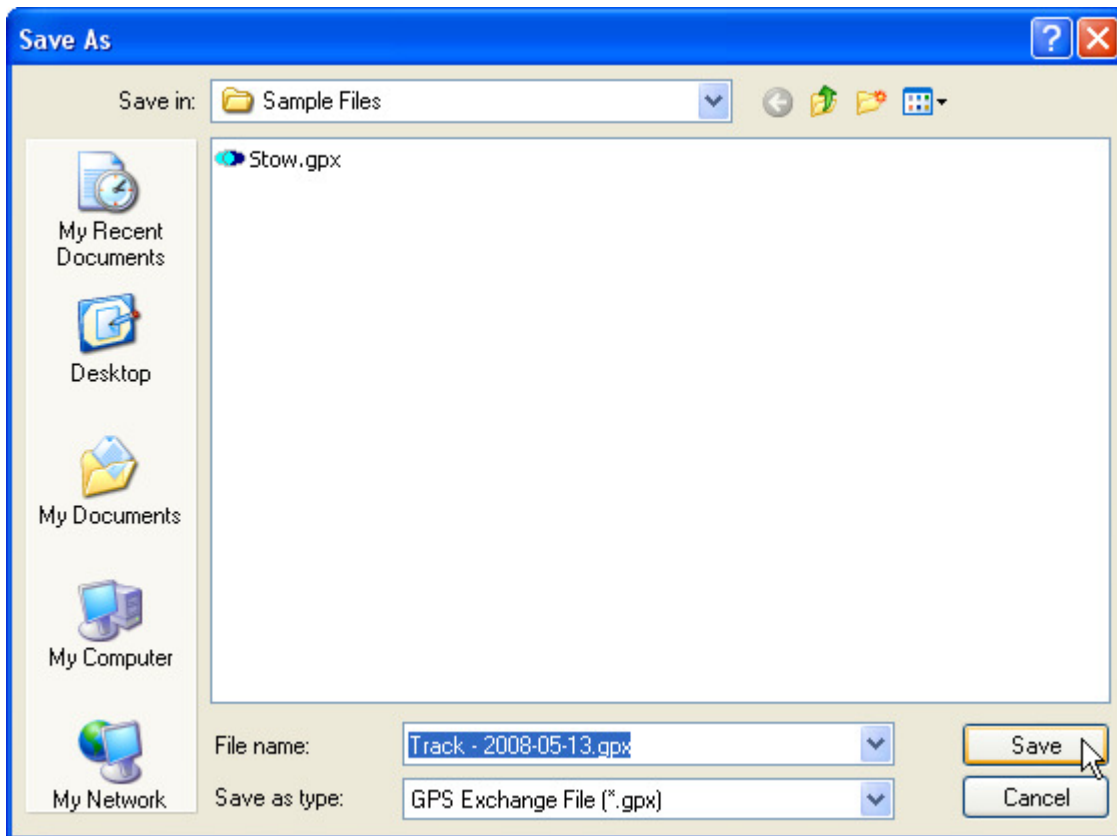


Then click **OK**.

Using Easy GPS – Saving Tracks as GPX

From the Easy GPS menus, choose **File ► Save As...**

USING EASY GPS FOR DOWNLOADING GPS DATA



Choose a disk location... then enter a file name (as per example above).

Save as type: “GPS Exchange File (*.gpx)”

Click **Save** to finish.

Final Note...

These are the basic steps that you will need to perform each day to download the GPS waypoints and track log from your GPS.

Once you have downloaded the data from your GPS, you should delete all waypoints and tracks from your GPS receiver. This ensures that the maximum amount of GPS memory is available to you for your next day's field data collection.