



# Kidman Trail Management Plan

# Kidman Trail Management Plan

## Contents

Page	
1	Kidman Trail Management Plan
2	Kidman Trail Management Plan
2	Contents
3	Introduction – the trail network
3	Role of Management Plan
3	The Kidman Trail philosophy
4	Overview of the trail
5	Demand for recreational trails
5	The Kidman Trail and Regional Development
5	Bringing business to local communities
6	Economic benefits
7	Building local skills
7	Marketing a region through trails
7	Triple bottom line benefits
7	Social benefits
8	Managers and stakeholders within the management framework
9	Trail development
10	Management framework
10	Financial resources
10	Management tools
11	Maintenance Agreements schedule
12	General Agreements schedule
12	Trail maintenance tools
12	Asset Register summary table
13	Operational Management – Horse SA
16	Kidman Trail risk management plan



Australian Government  
Department of Infrastructure, Transport,  
Regional Development and Local Government



Please note that this Kidman Trail Management Plan does not represent a final commitment by government nor imply any delivery commitment from either government or the private sector, or any funding obligations, for any specific project.

Copyright © HorseSA 2009.

All or part of this document can be copied and distributed with permission from, and with acknowledgement of, HorseSA.

Although every effort has been made to ensure the correctness and accuracy of the information, no warranty express or otherwise is given.

**IMPORTANT NOTICE:** Although all reasonable care has been taken in preparing this information, neither HorseSA nor its officers accept any liability resulting from the interpretation or use of this information or in any accompanying document. This information is subject to change without notice.

HorseSA  
PO Box 20  
Wayville SA 5034  
Australia  
Phone +61 8410 0423  
Email [horsesa@horsesa.asn.au](mailto:horsesa@horsesa.asn.au)  
<http://www.kidmantrail.org.au>

## Introduction – the trail network

The Kidman Trail network is comprised of a principal trail or spine running from Willunga to Kapunda via the Adelaide Hills & Barossa Valley, with a number of special interest features along the way.

The spine is located on a combination of country roads, State forest tracks, the Coast to Vine Rail Trail, unmade road reserves and private land.

The Kidman Trail also features a number of Trail Heads, which include parking areas for horse floats, water for horses and yarding.

In addition to the trail, there are a number of other trail networks integrated with the Kidman Trail. These include formal links with the Tom Roberts Horse Trail via the Coast to Vines Rail Trail and informal loops planned out by trail users.

## Role of Management Plan

This is the first management plan documented for the Kidman Trail that will guide management decisions and actions over the next three years (from 2009 – 2012).

The purpose of the Management Plan is to:

- Articulate a vision and priority actions;
- Guide resource allocations;
- Identify and guide future maintenance and development initiatives;
- Articulate policies for matters relating to the use of the trail; and
- Communicate and coordinate roles and responsibilities of stakeholders.

The Management Plan has been prepared so as to set out a comprehensive set of actions plans on the matters of:

- Infrastructure
- Maintenance
- Trail Development
- Risk Management
- Marketing and Information

The Business & Marketing Plans have been prepared as separate documents with several key actions integrated within this plan.

## The Kidman Trail philosophy

There is a strong philosophy to ensure that a number of key principles are followed:

1. Social benefit
2. Conservation of natural resources
3. Economic benefit
4. Recognition of our living cultural heritage (especially related to horse riding & the Australian landscape)

## Overview of the trail

### Location

The Kidman Trail is a multi use horse riding, cycling and walking trail that traverses 269 kilometres of roadsides, forest tracks, private land and unmade road reserves with trail markers indicating route.

Trail enthusiasts will enjoy “seeing the world in a different way” through the Fleurieu Peninsula, Adelaide Hills, Murraylands, Barossa and Clare Valley tourism regions.

The trail is proudly named after Sir Sidney Kidman, a prominent local pastoralist and horse breeder. Kidman was a pioneer of his time with unparalleled forethought in business and interminable community spirit.

The Kidman Trail provides a sustainable, safe and scenic trail that highlights the natural beauty, cultural history and major points of interest along the Mount Lofty Ranges.

A number of trailheads providing information on horse yarding, campsites and float parking are installed along the route.

Information including suggestions for equipment, overnight camping and trail ride planning can be found on the Kidman Trail website [www.kidmantrail.org.au](http://www.kidmantrail.org.au)

Maps for the trail are available in five sections, and are available for purchase from Horse SA.

Land Manager	Trail Distance (approx)
Onkaparinga Council	14 K
Alexandrina Council	14 K
Forestry SA (Kuitpo & Mt Crawford)	35.6 K
Mount Barker Council	87.5 K
City of Murray Bridge	16 K
Mid Murray Council	45.5 K
Barossa Council	67 K
Light Regional Council	26 k
Total (including spurs)	305.6

### History

The Kidman Trail, a South Australian Government project, is a high quality, international profile multi – use (horse riding/walking/cycling) trail from Willunga/McLaren Vale region to the Barossa Valley and Kapunda. The Office for Recreation & Sport (ORS) in partnership with Horse SA and land managers has developed the trail.

In July 2000 the South Australian Government, through the ORS, released the South Australian Recreation and Sport Horse Strategy. The strategy included a recommendation that a review of the Tom Roberts Trail Network occur and as part of this that the potential for expanding the trail north and south to the tourist destinations of the Fleurieu Peninsula and the Barossa Valley be investigated.

After investigations were undertaken a new trail with a separate route was recommended to capture the tourism regions.

Subsequent to this initiative, the South Australian Trails Coordinating Committee (SATCC) was formed under the direction of the ORS and the draft South Australian Recreational Trails Strategy 2005-2010 was developed with the Kidman Trail identified as a key trail for development.

Officers from Horse SA and ORS commenced these investigations and determined that a separate route, with its own identity, was the most appropriate option. A major tourism based trail, with a focus on development of small business to support trail related services, travelling between the Fleurieu Peninsula and the Barossa Valley was agreed.

Work commenced in 2003 on identifying and securing a suitable trail corridor – and the southern end of

the trail infrastructure, comprising approximately 40km, was completed and opened in 2005 by the Hon John Hill MP.

The Kidman Trail has been identified by through the draft Recreational Trails Strategy for South Australia, as one of South Australia's "Top Trails". This trail would complement the suite of tourism based trails, including The Riesling Trail (Rail Trail in Clare Valley), The Mawson Trail (cycling), and The Heysen Trail (walking). The SA Tourism Commission also complements promotions within their regional tourism publications. On the completion of the directional marking of the trail, a celebration was held in May 2008. Final work was completed in June 2009.



## Demand for recreational trails

Nationally, walking is the most popular and cycling the fourth most popular of 50 recreational activities. Bushwalking is the second most popular active recreation activity for residents of Adelaide, while 23% participate in cycling for pleasure. Horse riding is the 9th most popular sport for Australian women with nearly one third participating at least weekly\*.

(\* Draft Recreational Trails Strategy 2205-2010)

## The Kidman Trail and Regional Development

The trail itself is a mechanism for encouraging people to "see the world in a different way" The majority of users will be locals and South Australians. However, there is a significant market segment whose major reason for travel is to have a trail experience using their favourite medium, ie horse riding, cycling or walking. Collection of Kidman Trail user data has only recently commenced in 2009. However, as our society moves away from structured sporting options, the winner has been trails. This statement has been supported with data from the Bicycle Victoria website, in relation to the Murray to Mountains Rail Trail study released in 2006. [www.bv.com.au](http://www.bv.com.au)

*A number of rail trails conducted user counts over the Easter period. The first results to be published are from the Murray to Mountains rail trail. As expected, the number of riders continues to climb. The counts showed that:*

- Use between Everton and Beechworth increased by 25%, compared to the last year (2003)
- Since last year, total use has increased by 4.5%
- Total counts over the weekend are over 8,300.

Recreational trails should be considered as one of the best dollar investments in community infrastructure that can be made. The facility is open all year around, all day and night, is cost free to access, and is equally available to any socio-economic group.

## Bringing business to local communities

By planning the trail route to travel directly through small towns where possible, additional through-trade at

food, fuel and accommodation small business operators will be enhanced. Trade will be increased when club social days, special events or tourism groups are scheduled to use the trails. The Trail will travel through the following towns:

Town	Population*	State Electorates	Federal Electorate
Willunga	667	Mawson	Mayo
Echunga	1,200	Heysen	Mayo
Maccelsfield	350	Heysen	Mayo
Dawsley	300 est.	Kavel	Mayo
Keyneton	500 est	Schubert	Barker
Tungkillo	300	Schubert	Wakefield
Mount Pleasant	600	Schubert	Wakefield
Stockwell	410	Schubert	Wakefield
Kapunda	3,000	Stuart	Wakefield
TOTAL	7327		

\* sourced from DC of Mt Barker website during 2008

The Kidman Trail also travels through, or adjacent to, a number of 'hamlets' - collections of houses without town services, averaging a population of around 100, which are in a prime area to offer farm stay accommodation for trail travelers. These hamlets include:

Town	State Electorate	Electorate
Kuitpo	Heysen	Mayo
Wistow	Heysen	Mayo
Mt Crawford	Schubert	Barker
Moculta	Schubert	Wakefield
Lights Pass	Schubert	Wakefield
Ebeneezer	Schubert	Wakefield

## Economic benefits

The Kidman Trail is the primary long-distance multi-use trail in South Australia. It complements the suite of long-distance trails promoted by the South Australian Tourism Commission (SATC), namely the Heyson, Mawson, Yurrebilla & Riesling Trails. For more information refer to [www.southaustraliantrails.com](http://www.southaustraliantrails.com)

This project was designed to stimulate regional economic activity through trail users purchasing equipment, fuel, food, and accommodation along the route. There are new opportunities along the route for communities and farms to provide services to trail users including accommodation for people and horses, horse feed and related horse shoeing & care services. Regional tourism groups and clubs will have a facility on which to conduct events and commercial operators an additional route to start or expand their business.

The key business types needed to support a multi-use trail are:

1. Food supplies/food able to be packed in backpacks/saddlebags
2. Restaurants/bakeries & wineries with sit down eating
3. Accommodation – camping
4. Accommodation – hostel, shearers quarters
5. Accommodation – hotels

6. Accommodation - bed & breakfast, farm stay
7. Fuel/Garages – for support vehicles, casual users travelling to a trail chapter
8. Horse services – fodder deliveries to trail heads, farrier & veterinary. Accommodation which caters for horses as well as humans/yarding
9. Trail related equipment to prepare for the experience – bikes, horses, walkers
10. Trail Services – equipment hire
11. Tourism services – tag a long rides/walks, leaders/support vehicles, pick ups.
12. Maintenance/building contractors & suppliers (Trailhead establishment)

Throughout trail development, Horse SA has always engaged local contractors to undertake local work. This reinvests money back into a district, and assists in developing a sense of “ownership” for the trail.

## Building local skills

Horse SA, on a number of other trail projects, has partnered with Greening Australia to deliver youth training opportunities with a trail focus through the Youth Conservation Corps and Green Corps programs. Horse SA partnered with the District Council of Mount Barker for this project, providing youth training on the Kidman Trail through the Green Corps program.

On each occasion, liaison has occurred with local Council youth workers to ensure that local young people to the trail project are participants. This will continue.

The employability skills include teamwork, plant identification, fencing and use of tools & equipment.

As a result of this project, it is envisaged that future opportunities for employment of participants will be enhanced as the programs have addressed skills requirements for small business in the key areas of environment, hospitality, property maintenance and trail/soft adventure related tourism & recreation opportunities.

## Marketing a region through trails

A trail traverses a landscape and gives users a regional recreational experience. Trail experiences are also called “soft adventure” as marketed by SA Tourism Commission (SATC). The Kidman Trail will link with SA tourism regions, and local regional tourism plans. There are many natural areas of interest, lifestyle types and areas of historic interest that are embedded within The Kidman Trail marketing plan. SATC through Tourism SA only promotes finished products that are of a certain (high) standard. Additional funding, obtained through the Federal Government Regional Partnerships program will ensure that the Kidman Trail reaches this standard.

## Triple bottom line benefits

### Social benefits

The Kidman Trail provides an opportunity for increased physical and mental well-being of trail users through provision of a facility to promote recreational opportunities. Trail maintenance work undertaken by volunteers and contractors raises the profile of our horse community. This exposure works in two ways, allowing the community to recognise that volunteers have skills and attitudes that are of benefit to the Community (Learning by Doing) and also by supporting local businesses and keeping money and self-esteem within the community. By undertaking work on Community Land in their own Region, provides the local community a sense of “ownership” - which not only benefits the individual but provides a safety net to ensure that the infrastructure itself is cared for over the years to come by locals who have a direct attachment and involvement.

### Environmental benefits

A sustainable trail management includes management and maintenance of the “corridor” by land managers. Promotion of biodiversity, weed removal and habitat protection are integral to sustainable trail design and

maintenance.

### Cultural benefits

Through the naming of the trail, and information signage and literature, ensure our living cultural heritage of the horse rider in the Australian landscape will be preserved.

## Managers and stakeholders within the management framework

The ORS has had the overall responsibility for the development and management of the trail since its establishment.

### Horse SA is the operational partner for the Kidman Trail.

Partnerships with stakeholders and Government (State and Local) private landholders and community groups have been critical for a range of land management and maintenance functions.

### Relationship to relevant strategies and plans

This Management Plan has been prepared having regard for a number of related strategic plans and documents. This Management Plan acknowledges, integrates and supports those plans as appropriate. The most significant strategic documents and their relationship to this plan are summarised as follows:

### South Australia's strategic plan

South Australia's Strategic Plan launched in 2004, sets out six common objectives for all South Australians to work towards:

- Growing Prosperity
- Improving Well-being
- Attaining Sustainability
- Fostering Creativity and Innovation
- Building Communities
- Expanding Opportunity

Under these objectives are 98 targets. Several are relevant to this management plan as is the contribution the Kidman Trail can make to achieve the targets. The most relevant targets are:

#### **T1.15 Tourism Industry**

Increase visitor expenditure in SA's tourism industry from \$3.7 billion in 2002 to \$6.3 billion by 2014

#### **T2.2 Healthy Weight**

Increase the proportion of South Australians 18 and over with healthy weight by 10 percentage points by 2014.

#### **T2.3 Sport and Recreation**

Exceed the Australian average for participation in sport and physical activity by 2014

#### **T2.4 Healthy South Australians**

Increase the healthy life of South Australians by 5% for males and 3% for females by 2014

#### **T5.9 Regional population levels**

Maintain regional South Australia's share of the state's population (18%)

## South Australian Recreation & Sport Horse Strategy (2000)

This plan helped establish Horse SA and identify key outcomes for the South Australian horse community. This included a major new trail and a State Horse Centre.

## Draft Recreational Trails Strategy for South Australia 2005 – 2010

The draft Recreational Trails Strategy South Australia 2005 –2010 has a vision to provide a sustainable and diverse network of quality trails that enhances the lifestyle, health, environment and opportunities for South Australians and visitors to our state.

This plan sets out 6 key directions and articulates numerous strategies and actions to achieve its aims. There are many broad strategies and actions that support the attainment of a network of sustainable trails. The Kidman Trail is one of the major trails listed.

The Kidman Trail Business & Marketing Plan (2008)

This plan outlines marketing and business strategies (income opportunities) to support and promote trail sustainability.

## Trail development

Being a multi-land tenure trail, in principle support by the various land managers was key to it's development.

In total, the trail corridor moves through seven local council areas, two tracts of land managed by Forestry SA (Kuitpo Forest & Mt Crawford Forest) one section of old railway corridor, owned by Transport SA and leased by the City of Onkaparinga (Coast to Vines Rail Trail). A short section, near Stockwell, traverses land managed by Transport SA.

Through ForestrySA involvement in the SATCC, the Kidman Trail was supported and assistance with the development of Trail Head infrastructure has occurred. The trail routes through Mt Crawford and Kuitpo were negotiated with the respective forest rangers.

To secure the route on Council managed land, the trail proposal needed to be endorsed/supported by each Local Council. Presentations were made to Councils (generally full Council meetings with Elected Members.) Subsequent letters and/or Minutes of meetings were forwarded to provide "in principle" support for the Kidman Trail.

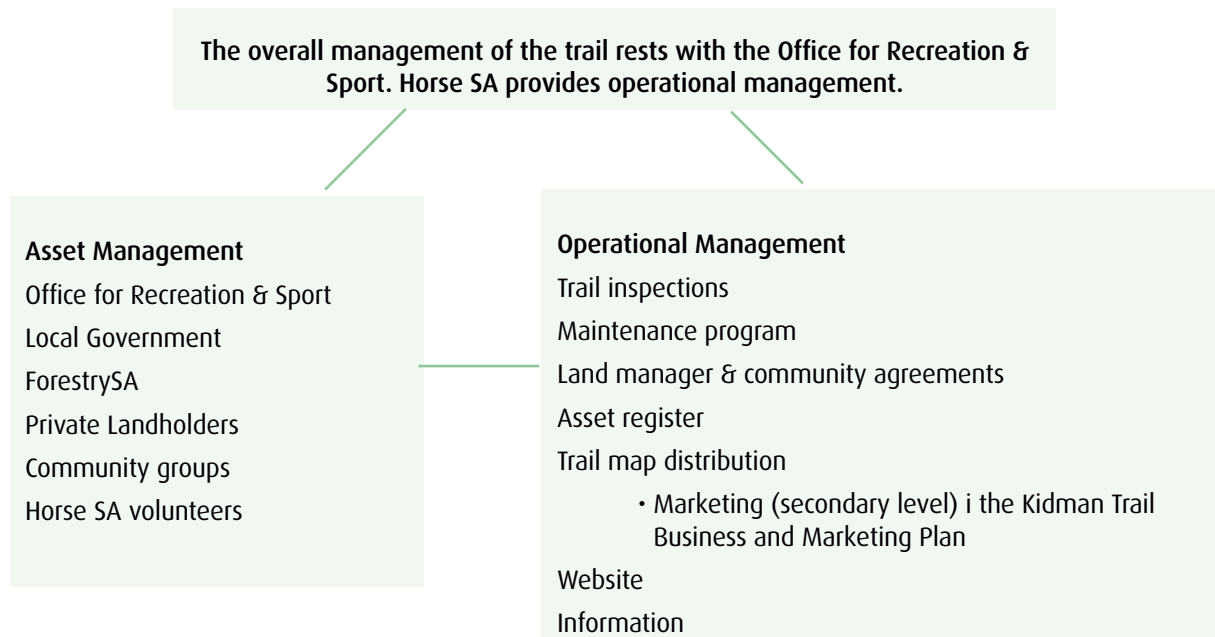
Three private trail use agreements have also been negotiated to provide safe access where existing roads presented a potential hazard.

A second disused railway corridor, located at Stockwell and managed by the Department for Environment & Heritage, is sought for use in the future. This will negate the need for a private land use agreement.

Local Council	"In Principle" Date
Onkaparinga	February 17th, 2004
Alexandrina	May 3rd, 2004
Mt Barker	April 18th 2005
Murray Bridge	December 11, 2006
Mid Murray	April 11th, 2005
Barossa	April 19th, 2005
Light Regional	March 15th, 2005

Trail License Agreements (Private Landowner Access Agreements)	Term	Review
Macclesfield 1	28.11.2011	annual
Macclesfield 2	05.12.2007	annual
Barossa	18.12.2007	annual

## Management framework



## Financial resources

The Kidman Trail was developed utilising Federal & State Government funds, predominantly through the Department for Infrastructure, Transport, Regional Development & Local Government and the Office for Recreation & Sport with support from other agencies and community organisations to meet all establishment costs. The trail has no outstanding debts or loans to service.

The ORS makes annual budget allocations for maintenance, including minor works, preventative maintenance and risk management. Any projects requiring capital expenditure are subject to future budget deliberations.

ORS has a service provision agreement with Horse SA for operational duties.

Primary marketing and information provision is funded through existing Government resources and include promotion through detailed maps, web based information and SATC regional visitor guides. Secondary level marketing is encouraged through Horse SA, land managers and community groups.

Human resources for the management of the trail are provided as part of staff duties within ORS.

## Management tools

The following tools are utilised for the management of the Kidman Trail:

### Maintenance agreement

This is a voluntary agreement between the land manager and Horse SA to undertake basic trail maintenance. These agreements are negotiated to reflect the responsibilities of both parties.

## Sample content of a Maintenance Agreement:

### Introduction & trail overview

#### Responsibilities: The Land Manager;

- Provide ongoing maintenance and management as part of normal Council programs in relation to the Trail, including pruning, erosion control, signage, path maintenance, and marker post maintenance, within budgetary constraints
- Receive recommendations from Horse SA for future maintenance, upgrades and improvements to the trail, to be considered within Council's annual budget process;
- Inspect the trail, when required, with a representative of Horse SA to identify and program any required on-ground maintenance and improvement works;
- Ensure that adequate funds are available to carry out essential maintenance works on the trail;
- Work with Horse SA to identify and consider continuous improvement measures; and ;
- In collaboration with Horse SA, promote the Trail as a valued community asset to be utilised by residents and visitors to the Council area.

#### Responsibilities Horse SA;

- Work with Council to continue to upgrade and further develop the Trail;
- Provide Council with replacement trail heads and other trail signage when required
- Work with the Council through ongoing maintenance and management programs;
- Inspect the trail yearly prior to arranging on-site inspections with the Council to plan on-ground works;
- Make annual recommendations to Council on future repairs/ maintenance and upgrades, each year as requested, for consideration in the annual budget process
- Investigate funding options over and above annual maintenance budgets to assist in implementing continuous improvement measures as agreed to by all parties;
- Work with Council to identify and implement continuous improvement measures; and
- Promote the Trail as a valued community asset to be utilised by residents and visitors to the Council.
- Date for review/Signatories

## Maintenance Agreements schedule

Local Council	Signing Date	Review
City of Onkaparinga	June 2006	annual
Alexandrina Council	Oct. 2007	annual
District Council of Mt Barker	Oct. 2008	annual
City of Murray Bridge	July 2008	annual
Mid Murray Council	Sept. 2008	annual
Barossa Council	July 2008	annual
Light Regional Council	April 2009	annual

## General Agreements schedule

Type of Agreement	Details	Signing Date	Review
Lease between Horse SA & DC of Mt Barker	Mt Barker Council (Lease of yards for Macclesfield, Nairne, Echunga)	Oct 2008	Annual
MOU	Kapunda Harness Racing Club – care of yards	June 2009	Annual
MOU	Southern Hills Pony Club (Willunga) – care of yards	March 2006	Annual
Minutes of Council meetings	Mid-Murray Council	April 2008 August 2007	n/a
letter	ORS Map Distribution Agreement	May 2008	Annual
letter	ORS Service Provision Agreement	Nov 2008	Annual
letter	Transport SA Letter of agreement	Nov 2005	n/a
letter	ForestrySA to ORS	June 2009	n/a

## Trail maintenance tools

The following tools are all available on [www.kidmantrail.org.au](http://www.kidmantrail.org.au)

### Maintenance

- Inspection templates
- Section maps
- Asset register (Spatial)
- Action report forms
- Reporting hazards

### Asset Register data collection methodology

- Data Collection Methodology (How to do it)
- Blank Data Collection Cover Sheet
- Blank Infrastructure & Asset Field Data Sheet
- Trail audit sheet
- Trail audit sheet codes
- Instructions on using Easy GPS for downloading GPS data

## Asset Register summary table

	Onka-paringa	Alexan-drina	Mt Barker	Murray Bridge	Mid Murray	Barossa	Light	Transport SA	Totals
Directional Markers	73	44	214	7	42	93	36	5	514
Trailheads Signs	1	0	4	0	2	3	1	0	11
Gates	0	3	24	0	11	14	0	0	52
Step-overs	1	5	18	0	0	5	1	1	30

## Operational Management – Horse SA

Kidman Trail: Trail Officer	Position Description
Responsible to	Horse SA Executive Officer
Last revised	March 2009
Remuneration	
Special Conditions	Country travel and out of hours work (including weekends) will be required
Term of position	
Approved	

### Position summary

The Trail Officer, under the supervision of the Executive Officer, is responsible for the co-ordination, planning, development, administration and delivery of Horse SA's operational roles in relation to the Kidman Trail.

The Trail Officer:

- Reports to the Executive Officer
- Manages the work associated with the Kidman Trail
- Manages the work of human resources relating to the Kidman Trail
- Works toward Horse SA's mission of growing the horse industry in SA

### Job specification

summary of the broad purpose of the position in relation to organisation goals:

1. Be responsible for the day-to-day management of the Kidman Trail
2. Ensure effective liaison with all land managers
3. Be responsible for managing and contributing to the achievement of outcomes of the Kidman Trail Business Plan
4. Manage and contribute to the innovative resourcing of the Kidman Trail operational roles and work with partner agencies to seek further investment long-term
5. Work towards the broader mission of having more people being physically active
6. Contribute to the identification of future opportunities.
7. Research and recommend opportunities for new or expanded Kidman Trail loops or links

### Reporting/Working relationships

The Trail Officer is accountable to the Executive Officer, Horse SA, who in turn reports to the Management Committee of Horse SA.

The Trail Officer works with and is responsible for the development and management of a range of stakeholders, which will include Land managers, private citizens, community groups & volunteers. Within a team environment, the Trail Officer contributes to management, planning and implementation of all aspects of Kidman Trail business to ensure the success of the community facility.

### Associated activities

The Trail Officer is responsible for contributing to the success of the Kidman Trail by:

1. Providing a management role, ensuring the efficient delivery of quality services to support ongoing operations for the Kidman Trail in metropolitan Adelaide and country SA, including:

- Supporting enquiries from event planners & users
- maintaining the website updates [www.kidmantrail.org.au](http://www.kidmantrail.org.au)
- providing scheduled reporting to the Office for Recreation & Sport
- conducting agreed inspections with all land managers (annual & “hot spots”)
- maintaining a register of repairs
- arranging for repairs & upgrades to take place
- collection of ongoing data inputs for the Kidman Trail asset register
- provision of reports to key stakeholders
- Contributing to the development of Kidman Trail budgets; Working to budgets; Effective implementation and reporting on budgets.
- Actively contributing to positively increase the profile of Horse SA (eg newsletter, publications, etc).

### Person specification

educational/Vocational Qualification

- Good computer skills
- Basic GPS waypoint & geotagging knowledge
- An ability to update data using ESRI ARC GIS software

### Personal abilities / aptitudes / skills

1. Strong personal commitment to the policies, principles and/or practices of Horse SA, including
  - Occupational Health, Safety and Welfare
  - Equal Opportunity and Anti-discrimination
  - Client and customer-oriented service provision
  - Personal and professional accountability
  - Demonstrated report writing and interpersonal skills.
  - The ability to work independently and autonomously within broad guidelines.
  - Project and management skills.
  - Demonstrated well-developed administrative, time management and organisational skills.
  - IT literacy
  - Proven ability to direct, delegate, set priorities and manage contractors & volunteers
  - A demonstrated interest in the interests of horse riders, cyclists and walkers.

### Experience

- Previous experience working in a not-for-profit organisation and with volunteers is essential
- Previous experience working with Local & State Government is essential

### Knowledge

- Microsoft Office “suite of applications” and the Internet.
- A minimum of basic skills with ESRI ARC GIS software
- The broad trails agenda

## Delegations

Promotion of the Association	As per approved media releases
Financial and Legal Authorities	As per approved program / project budgets and policy
Client Services	Within Horse SA policy guide lines
People Management	While the Executive Officer is the responsible officer in terms of the Occupational Health Safety and Welfare Act, and other legislation relevant to the employment of staff, the Trail Officer is delegated to monitor compliance with such legislation on a day-to-day basis in relation to Kidman Trail
Property and Equipment	The Trail Officer is the responsible officer in terms of the management of maintenance and upkeep of equipment and vehicles used in the program including the pool of tools & equipment.

## Kidman Trail risk management plan

A risk management plan is a proactive approach to managing risk to an acceptable level. This plan provides:

- assurances that steps are being taken
- promotion and demonstration of concern for user safety
- demonstration of intent to provide a reasonably safe environment
- reduction in losses and/or injuries
- more effective and efficient use of funds and resources
- increased safety for users

Hazards found in our natural environment are always present, as are hazards caused by natural events and weather. Whether a trail user decides if something is a hazard depends on their experience, perceptions, level of risk acceptable risk for themselves and the willingness to problem solve (response to risk) in the field to avoid problems from hazards. As the owner of the Kidman Trail facility where the public is actively invited to recreate, the South Australian Government has an obligation to promote public safety and a duty to warn. Duty of care includes:

- keeping the Kidman Trail in good repair
- regular inspections to record apparent hazards
- treatment for hazards
- anticipating foreseeable uses and activities by users and taking reasonable precautions to protect users from foreseeable dangers

Having a Kidman Trail Risk Management Plan is used to increase safety and also is a part of Duty of Care. This risk management plan should:

- Take reasonable precautions to prevent risks occurring
- Suggest treatments & timeframes for address identified hazards
- Identify where the assumption of risk is moved to third parties

### Definition of Terms

**HAZARDS:** Potential threats

**RISK:** Risk is the probability of a hazard occurring

**RISK ANALYSIS** is made up of 3 components

- Risk identification – e.g. Trail Users are unprepared
- Risk estimation – (made up of probability that a hazard will occur and the consequences)
- Risk evaluation – degree of risk

**RISK ASSESSMENT:** Risk assessment goes one step further than risk analysis by judging the importance of the consequences of a risk event. Thus, risk assessment necessarily involves making value judgments.

**RISK MANAGEMENT:** Reduction and control of risk to an acceptable level.

Potential hazard	Who is at risk	Existing Controls	Risk Rating	Preventative measures
Becoming geographically displaced	users	Trail head signs with maps	L	<ul style="list-style-type: none"> <li>• Inspected as per Land Manager MOU</li> <li>• Full colour signage, vandal proof coating</li> </ul>
		Trail markers	L	<ul style="list-style-type: none"> <li>• Inspected as per Land Manager MOU</li> <li>• Encourage users to report damaged/missing infrastructure</li> <li>• Ensure contact details/online reporting options are functioning</li> <li>• Consistent signage, reflective arrows</li> </ul>
		Trail maps	L	<ul style="list-style-type: none"> <li>• Spatial data kept up to date as required</li> <li>• Maps reprinted on demand</li> <li>• Maps sold from a range of locations</li> <li>• Mud maps found on trail head signage and uploaded to <a href="http://www.kidmantrail.org.au">www.kidmantrail.org.au</a></li> <li>• Agreement with ORS re costs being covered for reprint</li> <li>• Water repellent paper used, full colour</li> </ul>
		Trail all located on public roads & corridors of land	L	<ul style="list-style-type: none"> <li>• Reduces wandering off of trail between markers</li> </ul>
Trail users unprepared	users	Information & Training	M	<ul style="list-style-type: none"> <li>• Information on preparation included on Trail heads and Maps</li> <li>• Information re horses need to be used to traffic &amp; controllable</li> <li>• Suggested list of items to take is on <a href="http://www.kidmantrail.org.au">www.kidmantrail.org.au</a>• Links to lead agencies/organisations to provide information and training on <a href="http://www.kidmantrail.org.au">www.kidmantrail.org.au</a></li> <li>• Trail is not located in remote areas</li> </ul>
General Hazards	users	Trail inspection & maintenance	H	<ul style="list-style-type: none"> <li>• Maintenance agreements with Land Managers</li> <li>• Inspections as per MOU</li> <li>• Baseline maintenance schedule for all Land Managers</li> <li>• How to report hazards info is on trail head signage, maps, <a href="http://www.kidmantrail.org.au">www.kidmantrail.org.au</a></li> <li>• Trail hazard register kept by Horse SA</li> <li>• Horse SA Trail Officer to liaise with Land Managers &amp; record actions</li> <li>• ORS annual budget allocation for officer to inspect trails &amp; Licences</li> <li>• ORS annual budget allocation for maintenance</li> <li>• Horse SA to seek ongoing funding for continuous upgrades</li> <li>• Volunteers &amp; trail users encouraged to report trail hazards</li> <li>• Documentation to record hazards on <a href="http://www.kidmantrail.org.au">www.kidmantrail.org.au</a></li> <li>• Trail “hotspots” inspected more frequently</li> <li>• Volunteer register kept, for people who will look after a trail section &amp; report any works</li> </ul>

Potential hazard	Who is at risk	Existing Controls	Risk Rating	Preventative measures
Emergency medical access	users			<ul style="list-style-type: none"> <li>All of trail can be accessed by 4WD vehicle</li> <li>Ambulance SA, head office have been provided a copy of Kidman Trail maps</li> </ul>
Fire	users			<ul style="list-style-type: none"> <li>ForestrySA closed on Total Fire Ban days</li> <li>Notice on signage and maps regarding fire ban information</li> <li>All of trail can be accessed by 4WD vehicle</li> <li>CFS &amp; MFS head office have been provided a copy of Kidman Trail maps</li> <li>www.kidmantrail.org.au linked to www.bom.gov.au</li> </ul>
Flood	users			<ul style="list-style-type: none"> <li>Deep water at river crossings only, no landscape wide flood history on trail route</li> <li>Depth markers installed at key crossings</li> <li>General warnings on trail head signs</li> <li>www.bom.gov.au linked to www.kidmantrail.org.au</li> </ul>
Infrastructure	Users	Signage level 1 – trail heads		<ul style="list-style-type: none"> <li>Signs professional designed &amp; manufactured</li> <li>All trail head signs installed by Land Managers</li> <li>Recorded &amp; photographed in Asset Register</li> <li>Inspected as part of agreements</li> </ul>
		Signage level 2- directional		<ul style="list-style-type: none"> <li>All consistent posts</li> <li>Trail plates consistent, reflective arrow</li> <li>Recorded &amp; photographed in Asset Register</li> <li>Posts installed by Land Managers in Onkaparinga, Alexandrina, Mid-Murray</li> <li>Inspected as part of agreements</li> <li>Posts &amp; markers held by Horse SA</li> <li>Recorded &amp; photographed in Asset Register</li> <li>All Land Managers were provided with spare posts &amp; markers</li> </ul>
		Signage level 3 Site information		<ul style="list-style-type: none"> <li>Site specific</li> <li>Made as required</li> <li>Provides general warnings &amp; info</li> <li>Recorded &amp; photographed in Asset Register</li> <li>Inspected as part of agreements</li> </ul>
		Signage – 3rd party		<ul style="list-style-type: none"> <li>Designed and installed by land managers (e.g. Councils, Transport SA)</li> <li>Recorded in Asset Register</li> </ul>
		Trail heads		<ul style="list-style-type: none"> <li>Inspected as part of MOU agreements</li> </ul>
Liability		Trail is located on Local Government Land		<ul style="list-style-type: none"> <li>Kidman Trail minuted in Council minutes</li> <li>Maintenance agreements for responsibilities</li> <li>Annual inspection</li> </ul>
		Trail is located on State Government Land		<ul style="list-style-type: none"> <li>Kidman Trail is a State Government Facility (ORS)</li> <li>Maintenance agreements with other SA Government agencies</li> <li>Letter with Transport SA</li> <li>Annual inspection</li> </ul>

Potential hazard	Who is at risk	Existing Controls	Risk Rating	Preventative measures
		Trail is located on Private Land		<ul style="list-style-type: none"> <li>• State Government Trail Licence Agreement (TCA)</li> <li>• Annual review of agreement</li> <li>• District Council of Mt. Barker assists with maintaining land under Trail Licence. Letter of agreement with ORS.</li> <li>• Annual inspection</li> </ul>
		Trail heads located on Community Land		<ul style="list-style-type: none"> <li>• Lease agreements</li> </ul>
		Contractors		<ul style="list-style-type: none"> <li>• Contractors to provide evidence of Public Liability Insurance (PLI)</li> </ul>
		Volunteers		<ul style="list-style-type: none"> <li>• Horse SA has current volunteer PLI</li> </ul>
		Trail users		<ul style="list-style-type: none"> <li>• Procurement of own PLI &amp; personal accident insurance is encouraged</li> </ul>



